

**39th ANNUAL SHANE BROCK MEMORIAL TRACK MEET**  
**MAY 5, 2018**  
**LANDER VALLEY HIGH SCHOOL**

- Entry Fee:** \$100.00 for each school (boys and girls combined)
- Entries:** Due on RunnerCard by 7:30 a.m. on Sat., May 5. Maximum of four events per athlete. Unlimited entries per event, and up to two relay teams.
- Scratches:** Should be made Sat. morning before 7:30 a.m. on runnercard. No additions will be allowed.
- Equipment:** Pole vault, Shot, and discus weigh-ins will be at 8 in the track shed north of the grandstands.
- Rules:** NFHS rules will apply. This is a WHSAA qualifying meet. FAT timing system will be used.
- Throws/jumps:** Throwers and jumpers will be allowed three tries. Top nine to finals for three more tries. Attempts that do not clear these minimum throw lines will not be measured: Boys Disc: 90 feet/ Girls Disc: 70 feet/ Boys Shot: 35 feet /Girls Shot: 25 feet
- Hospitality:** In auxiliary gym, for meet officials, bus drivers and coaches only.
- Packets:** Packets can be picked up in the press box. Packets include order of events, WHSAA qualifying form, invoice and trash bag for camp cleanup.
- Parking/Team Camps:** See attached diagram for bus parking/team camps.
- Contacts:** Ben Gose, [bgose@landerschools.org](mailto:bgose@landerschools.org)  
Serol Stauffenberg,  
[sstauffenberg@landerschools.org](mailto:sstauffenberg@landerschools.org)

**SHANE BROCK INVITATIONAL TRACK MEET  
MAY 5, 2018  
LANDER VALLEY HIGH SCHOOL**

**ORDER OF EVENTS**

FIELD EVENTS

**9:00 a.m.** High Jump-- Girls (east pit) and Boys (west pit)  
Girls Discus, followed by Boys  
Boys Shot Put, followed by Girls  
Boys Pole vault, followed by Girls  
Girls Long Jump, followed by Boys  
Boys Triple Jump, followed by Girls

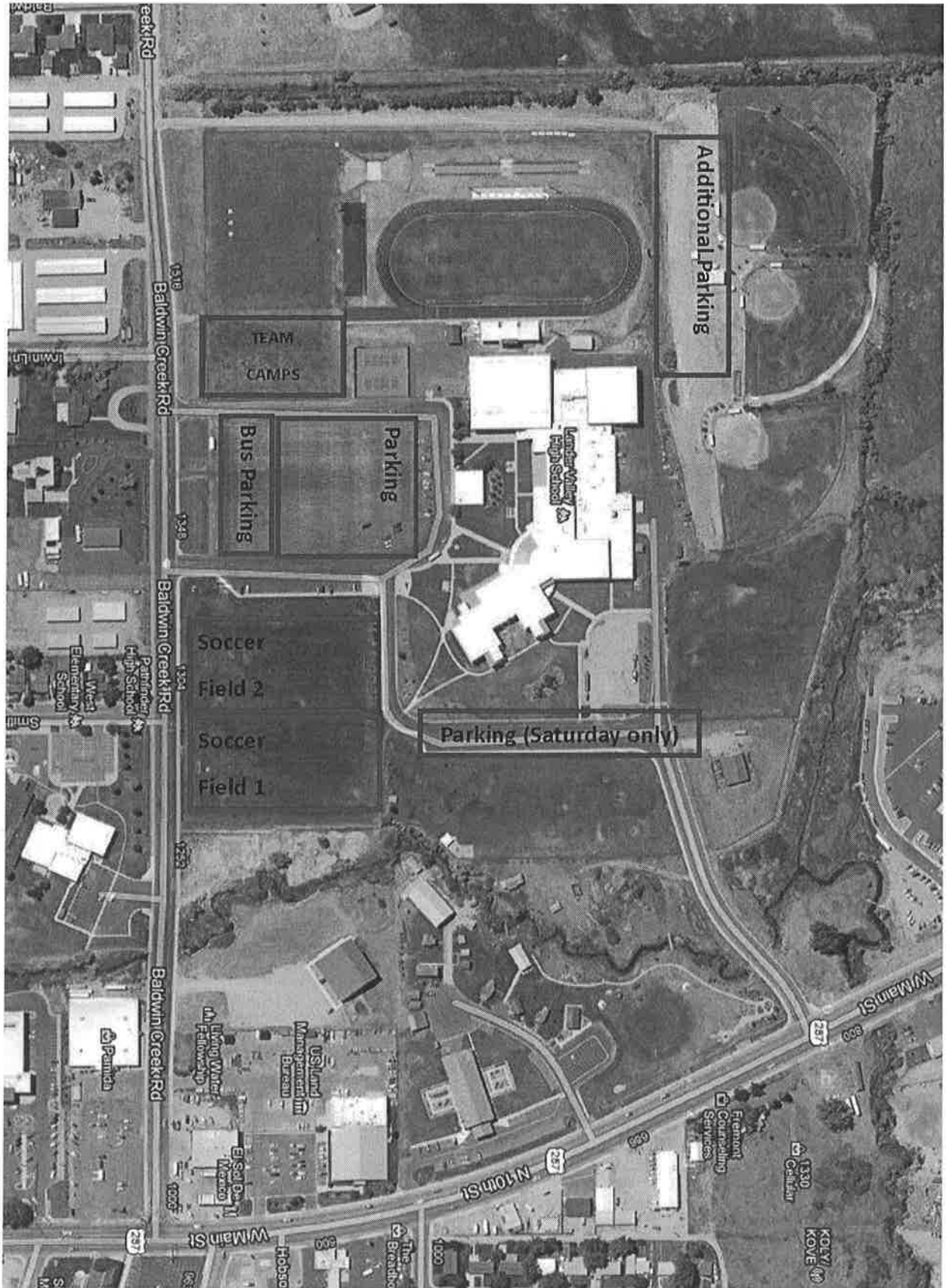
TRACK EVENTS

Girls followed by boys. All running events will be timed finals.

**10:30 a.m.** Sprint Medley Relay  
4x800 Meter Relay  
Girls 100 Meter Intermediate Hurdles  
Boys 110 High Hurdles  
100 Meters

30 min lunch break. Recognition of senior Lander athletes and Coach Harms for 50 years coaching Lander track.

1600 Meters  
4x100 Relay  
400 Meters  
300 Meter Hurdles  
800 Meters  
200 Meters  
3200 Meters  
4x400 Meter Relay



Additional Parking

TEAM  
CAMPS

Bus Parking  
Parking

Kendall Mill  
High School

Soccer  
Field 2  
Soccer  
Field 1

Parking (Saturday only)

Baldwin Creek Rd

Baldwin Creek Rd

Baldwin Creek Rd

Baldwin Creek Rd

W Main St

N 10th St

W Main St

Eaton & Co.  
Consulting  
Services

US Land  
Management  
Bureau

Living Water  
Fellowship

El Sol De  
11  
Mexico

Cellular

KOZY  
KOVE

The  
Break

Hobsc

Pamela

West  
Elementary  
School

High School

Smith

Baldwin Creek Rd

Irwin Ln